

- Er

Here are the scores for a recent test in M414 Statistics.

normal	90	95	100	80	80	75	80	70	60	95	100	100
elov	75	80	90	90	90	70	70	80	85	90	90	85

Answer the following questions regarding this set of data.

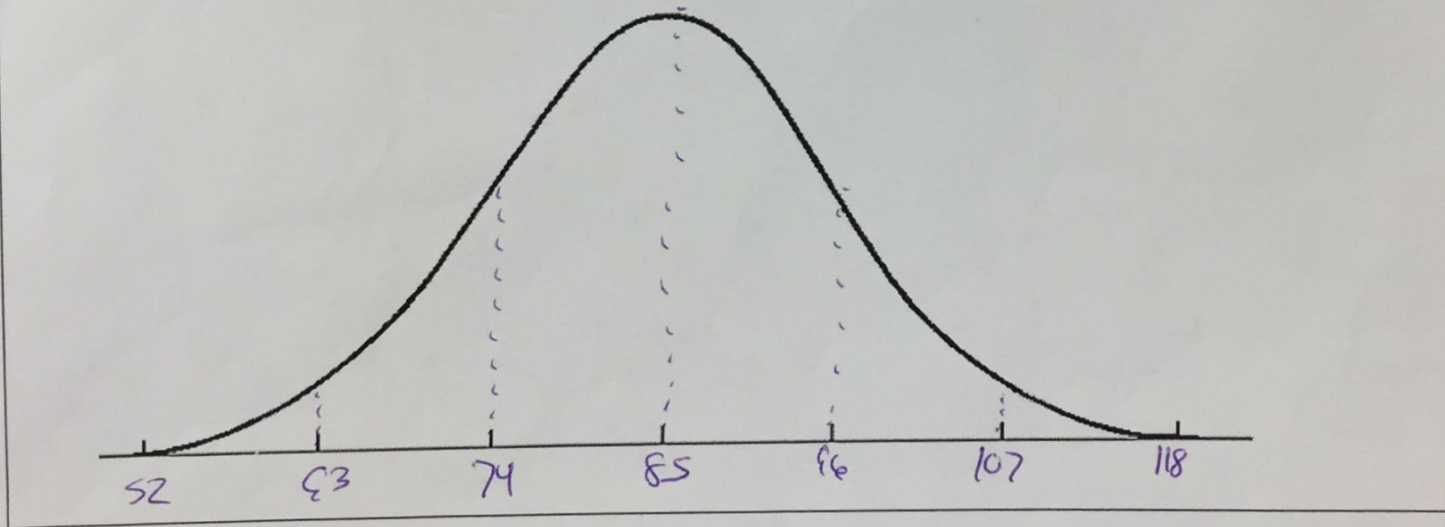
Median = 87.5 Mean = 85 Mode = 90

Standard Deviation = 11 Variance = ~~121~~

How many scores are within 1 standard deviation of the mean? ~~17~~ 17.67

How many scores are within 2 standard deviations of the mean? ~~24~~ 24.7

Hint: Drawing the curve will help answer the last two questions!!!



$Q1 = 85 - 7.37 = 77.63$

$11(.67) = 7.37$

$Q3 = 85 + 7.37 = 92.37$